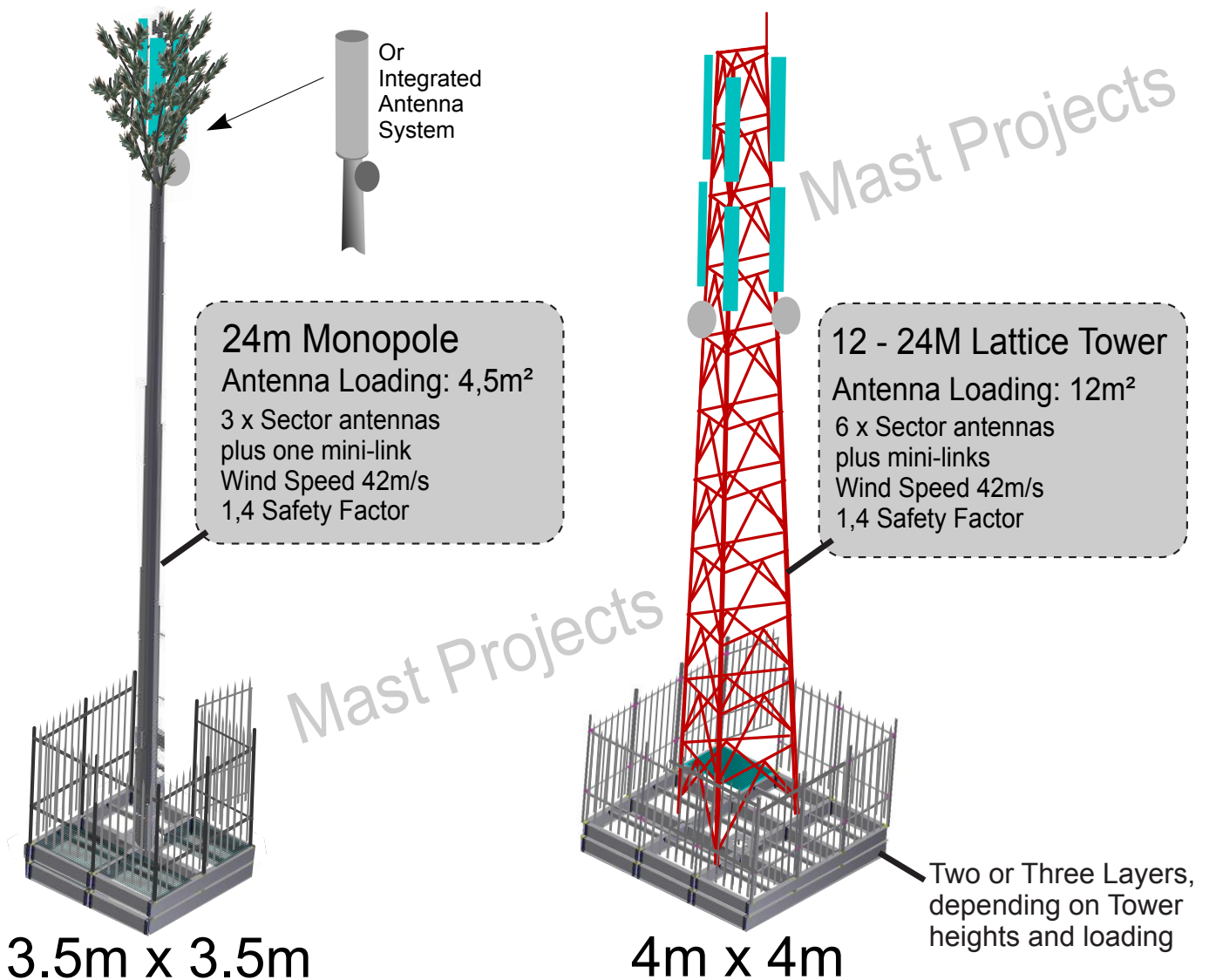


# Rapid Deployment Cellular BTS Site

1. Fast and Cost Effective roll-out of BTS Sites.
2. Universal Beam structure, bolted to provide custom sized cellular site.  
(No conventional concrete and rebar foundation)
3. Palisade Fencing bolt on, all parts hot-dip galvanized.
4. Excavate area 500 - 900mm deep, compact, assemble beam structure.
5. Fill beam structure with soil excavated from site, compact and secure grid flooring.
6. Erect tower, fit Gen-set and Radio and Battery Cabinets.
7. Site can be permanent, or removed when permanent sites are up.
8. Re-deploy site elsewhere.
9. Whole site is provided as a nuts and bolts kit, to be assembled on site.



Copyright 2013 - Mast Projects CC

Tel: +27 11 306 7000/1  
Fax: +27 11 306 7002  
Website: [www.mastprojects.co.za](http://www.mastprojects.co.za)



Rapid Deployment - Cell Site

Rev. 3 : 15 Feb. 2013